

LOS ANGELES COUNTY - OFFICE OF VIOLENCE PREVENTION TRAUMA PREVENTION INITIATIVE (TPI) IMPACT REPORT: 2022

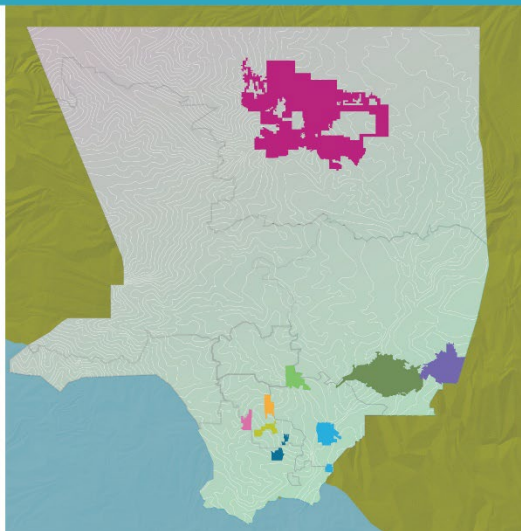
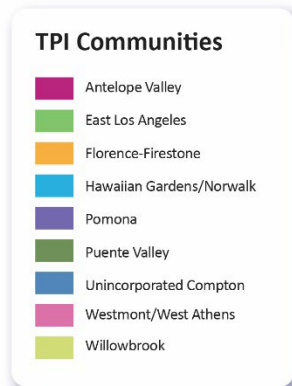
ANTELOPE VALLEY | EAST LOS ANGELES | FLORENCE-FIRESTONE | HAWAIIAN GARDENS/NORWALK
POMONA | PUENTE VALLEY | UNINCORPORATED COMPTON | WESTMONT/WEST ATHENS | WILLOWBROOK

Trauma Prevention Initiative (TPI) is a comprehensive, place-based initiative that reduces community violence through evidence-based strategies and collaborations that support communities and advance systems change. The Los Angeles County Department of Public Health (Public Health) began funding TPI strategies in 2016 in four unincorporated communities in South Los Angeles with the highest rates of violence including: **Westmont West Athens, Willowbrook, Florence Firestone** and **unincorporated Compton**.

Public Health invests in three key areas of TPI: **1) Intervention**, using a peer approach to break the cycle of violence in hospital and community settings; **2) Prevention Infrastructure**, supports community dialogue and decision making, and funds community identified strategies; and **3) Capacity Building**, provides technical assistance for grassroots organizations and multi-disciplinary training opportunities. In 2022, TPI also collaborated with Parks and Recreation to provide evaluation and safe passages support for Parks After Dark and a new youth program, Our SPOT. This report highlights TPI's impacts in 2022.

TPI Expansion

LA COUNTY TRAUMA PREVENTION INITIATIVE - Los Angeles County Service Planning Area



On July 13, 2021, the County Board of Supervisors approved a motion to expand TPI to five new communities and provide additional resources to South Los Angeles communities for one year. TPI expanded to three communities in the County's First Supervisorial District: East Los Angeles, Puente Valley, and Pomona; one region in the County's Fourth

Supervisorial District: Hawaiian Gardens and Norwalk; and to Antelope Valley in the County's Fifth Supervisorial District. Ongoing funding for the expansion was secured in October 2022.

LOS ANGELES COUNTY - OFFICE OF VIOLENCE PREVENTION TRAUMA PREVENTION INITIATIVE (TPI) IMPACT REPORT: 2022

ANTELOPE VALLEY | EAST LOS ANGELES | FLORENCE-FIRESTONE | HAWAIIAN GARDENS/NORWALK
POMONA | PUENTE VALLEY | UNINCORPORATED COMPTON | WESTMONT/WEST ATHENS | WILLOWBROOK

2022 Milestones

TPI Expanded to nine communities across LA County



Expanded Hospital Violence Intervention Programs from one to four hospitals



Hired a Gang Intervention Specialist to coordinate field operations for Street Outreach Services.



Hired a team of four Community Health Workers to support community engagement in each region.



TPI received the 2022 Model Practice Award from the National Association of City and County Health Officials (NACCHO)



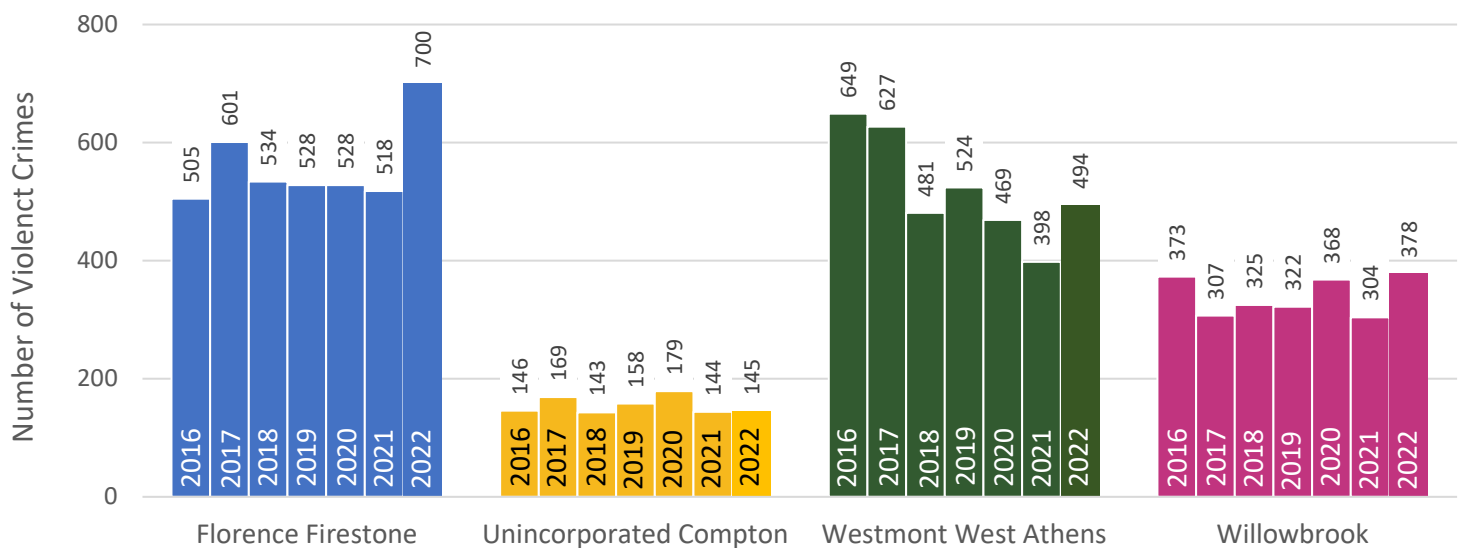
For more information: <http://www.ph.lacounty.gov/ovp/TPI.htm>



Violent Crime Trends

Between 2016 (the year before Street Outreach implementation) and 2022, violent crimes in two communities declined. The greatest crime declines were in Westmont West Athens (-24%), which has had ongoing community engagement infrastructure. Violent crime in Unincorporated Compton (-1%) and Willowbrook (+1%) remained relatively the same. Florence-Firestone saw an increase in violent crimes during 2022 (+39%). Los Angeles County Sheriff's Department (LASD) also reported an overall increase of 3% in violent crimes between 2016 and 2022. Following the 2020 COVID-19 pandemic, LASD reported an increase in violent crimes in both 2021 and 2022.

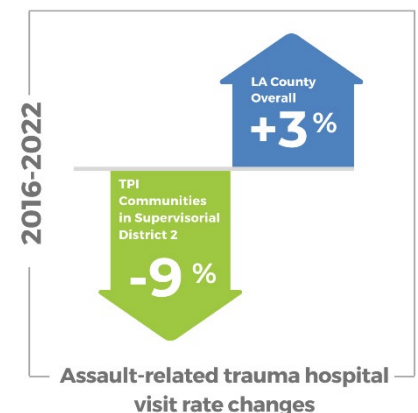
Violent Part 1 Crimes* by TPI Community, 2016-2022



*Violent part 1 crimes include aggravated assault, criminal homicide, forcible rape, and robbery. Annual crime files provided by Los Angeles County Sheriff's Department.

Assault-Related Trauma Hospital Visits

Between 2016 and 2022, year six of Hospital Violence Intervention Program (HVIP) implementation, TPI communities in Supervisorial District 2 saw a 9.2% reduction in assault-related trauma hospital visit rates (from 156.5 in 2016 to 142.1 in 2022**), compared to a 3.0% rate increase in LA County overall (from 50.5 in 2016 to 52.0 in 2022**). There was a reduction of 28 trauma center visits in TPI communities in 2021 (n=224) compared to 2016 (n=252). This reduction represents a savings of about \$213,752 in medical costs alone, and a savings of \$2,862,300 when taking medical, lost work, and quality of life costs related to the injuries into account. This is likely an underestimate because costs are based on all emergency visits for assaults, while trauma center visits are likely more costly to treat.***



**Assault-related trauma hospital visit rates per 100,000 people.

***Data source: CDC WISQARS (<https://wisqars.cdc.gov/>)

Intervention

TPI invests in a peer approach that employs credible messengers to address the immediacy of violence, promote peace, and enable prevention strategies to take root.

Hospital Violence Intervention Program (HVIP)



TPI increased funding for HVIP and added three new hospitals. In addition to existing services provided by Crossroads at St. Francis Medical Center, TPI began funding HVIP services at Los Angeles General Medical Center (formerly LAC+USC Medical Center) in partnership with Soledad Enrichment Action, and at Pomona Valley Hospital and Harbor UCLA Medical Center in partnership with Crossroads.

Hospital Referrals



1,225 victims of violence were engaged in the Hospital Violence Intervention Program



353 clients were enrolled and received case management services



Service Referrals

295

clients received at least one referral for support services

17%

referred to Medical/
Mental Health Services

48%

referred to Victims
of Crime Assistance

Clients Engaged by Hospital

- 509 Harbor UCLA
- 334 St. Francis
- 205 LA General
- 119 Pomona Valley
- 58 Other*



* Includes Rancho Los Amigos Rehabilitation Center, community referrals, and street outreach referrals.

Intervention

TPI invests in a peer approach that employs credible messengers to address the immediacy of violence, promote peace, and enable prevention strategies to take root.

Street Outreach & Community Violence Intervention Services (SOCVI)

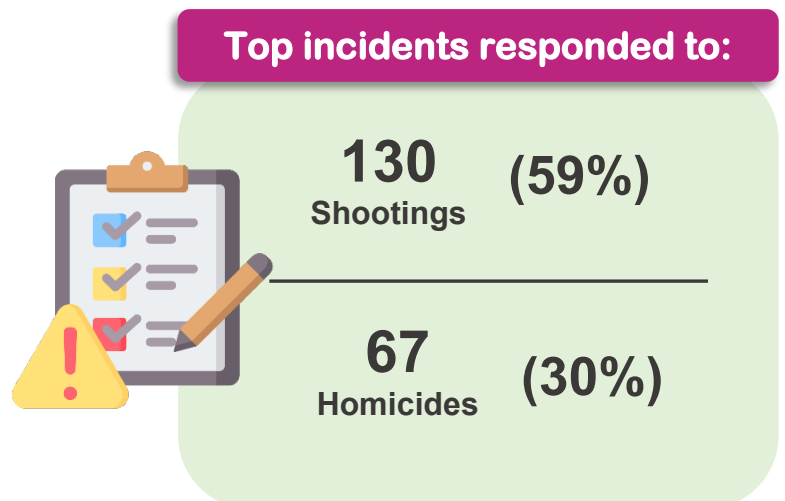
Implementing SOCVI

TPI contracted with local agencies to provide Street Outreach services. In the five new communities, TPI also built collaborative relationships with Sheriff stations, law enforcement agencies, parks, and cities to support public safety coordination, joint problem solving, and incident response.



SOCVI Activities

During 2022, agencies conducted **16,081** activities to promote peace and minimize potential for retaliation across the nine TPI communities. Community Intervention Workers (CIWs) also responded to 221 incidents during 2022, including 130 shootings and 67 homicides.



For more information: <http://www.ph.lacounty.gov/ovp/TPI.htm>

Prevention

TPI invests in community leadership and empowerment, leverages parks as community hubs for innovative programming, and advances community priorities such as healing arts.

Community Action for Peace (CAP)

Establishing CAP Networks



TPI increased investment in community engagement and contracted with community-based organization(s) to facilitate new network building in seven of the nine TPI communities. For these services, TPI partnered with Rising Communities (formerly Community Health Council), Los Angeles Centers for Alcohol and Drug Abuse (L.A. CADA), Community Build Inc., and Antelope Valley Partners for Health. TPI staff worked closely with these agencies to connect with local stakeholders, conduct a landscape analysis to understand local needs, and develop a strategy for long-term community engagement. In addition, TPI conducted a series of listening sessions in the new communities to provide an update on the TPI expansion, opportunity to dialogue, and introduce our contracted agencies to the community.

CAP Mini Grants

Grant funds were used to address needs in the community as identified and agreed upon by CAP members. Westmont West Athens CAP members prioritized a Community Intervention Worker (CIW) training. They worked with I'm a Movement Not a Monument, who helped develop a 4-part training filled with interactive information. The trainings were provided at local schools, community-based organizations, and law enforcement agencies.



Willowbrook CAP members worked with Willowbrook Inclusion Network (WIN) to develop a series of training sessions, workshops, and community events to educate residents on the importance of community based public safety, as well as provide them with the skills and knowledge necessary to effectively mediate or intervene in acts of violence.

Prevention

TPI invests in community leadership and empowerment, leverages parks as community hubs for innovative programming, and advances community priorities such as healing arts.

Parks Are Safe Zones (PSZ) Campaign

Due to increased violence around parks in 2021, TPI's Street Outreach providers expressed a need to revive the Parks Are Safe Zones campaign, which as originally launched in 2018 in South LA. The goal of the campaign is to encourage community members to use the parks, and support CIW

messaging to gang neighborhoods that parks are off limits to violence. In 2022 TPI relaunched the campaign in South LA, and to new communities including East Los Angeles, Puente Valley, Pomona, Hawaiian Gardens/Norwalk, and Antelope Valley. The Parks Are Safe Zones Spring 2022 relaunch included the distribution of reusable face masks, bracelets, and bilingual lawn signs. TPI also contracted with RadioWave Marketing and Promotions LLC to purchase 26 advertising units to display Parks Are Safe Zones artwork from April - June 2022, at bus shelters and billboards.



6,000

reusable face mask

2,000

bracelets

1,200

bilingual lawn signs

PSZ Materials Distributed

2

bus stops

24

junior billboards

PSZ Advertising

Steering Committee Summit

In 2022, L.A. CADA conducted a day-long summit to help develop a common vision and cohesive network. For the first time since the inception of the TPI program, CAP Steering Committee members from both Willowbrook and Westmont West Athens came together to explore project successes and discuss future objectives.

The discussions centered around reassessing the focus and structure of the CAPs, roles and responsibilities of CAPs, ensuring the Community Engagement contractors are meeting the needs of the CAPs, CAP cross-collaboration, long-term vision for CAPs, and how OVP can best support each community.



For more information: <http://www.ph.lacounty.gov/ovp/TPI.htm>

Capacity Building

TPI provides technical assistance to help strengthen grassroots organizations and fund multi-disciplinary trainings for community partners to promote collaboration and healing.

Mindful Leadership

From March to June 2022, Cities4Peace customized and delivered a two-step intervention. In the first step, 35 community stakeholders were trained in an introduction to the Mindful Leadership curriculum. The session provided participants with an understanding of Cities4Peace's unique theory of change as well as breath and meditation exercises to experience healing and transformation. From the introductory session, 29 participants, including OVP staff and CIWs across all nine TPI communities, were then selected to attend the full Mindful Leadership workshop which provided them with a deeper experience. The Mindful Leadership training program consisted of the International Association for Human Values' (IAHV) evidence-based breath and meditation practices to develop inner resilience and improve mental wellbeing.



35

Stakeholders trained

Peace and Resilience Programs



From April to June 2022 the Westmont Counseling Center carried out the Peace and Resilience Program I. This program was a series of workshops, psychoeducational and experiential classes, followed by a full-day wellness retreat designed to help CIWs reduce the impact of extraordinary stress and trauma that they face in their work. Following its success, the Peace and Resilience Program II was implemented between July 2022 – March 2023. The program had six components: 1) Trainings for Community Mental Health Ambassadors, 2) Trauma Informed Workshops, 3) Ceasefire Healing Sessions, 4) Day of Reflection, 5) Wellness Retreat and 6) Continuing psychotherapy for CIW's and their associates. The program also educated participants about mental health issues and empowered them to go into the community as mental health Ambassadors. They are now out in the community reducing the stigma around mental health issues and promoting treatment and healing.

13

events

350

CIWs participated

Peace and Resilience Program II

For more information: <http://www.ph.lacounty.gov/ovp/TPI.htm>

Evaluation and Safe Passages Support for Our SPOT

The Department of Parks and Recreation's Our Social Places and Opportunities for Teens (Our SPOT) Program is a year-round county initiative that takes place in nine parks in vulnerable communities throughout Los Angeles County. Our SPOT engages participants in programming in arts and self-exploration, youth leadership, life skills and healthy development, career pathway exploration, educational and recreational field trips, mental health and resilience education including substance abuse prevention, and special events promoting self-empowerment. Additionally, the program is grounded by eight program characteristics associated with promoting positive youth development:

- 1) Safe and health-promoting facilities
- 2) Clear and consistent rules and expectations
- 3) Warm, supportive relationships
- 4) Opportunities for meaningful inclusion and belonging
- 5) Positive social norms
- 6) Support for efficacy and autonomy
- 7) Opportunities for skill building
- 8) Coordination among family, school, and community efforts.

TPI staff coordinate evaluation of Our SPOT to understand its impact on positive youth development and coordinate safe passages services. The safe passage efforts, funded through Public Health's TPI program, ensures that youth get in and out of parks safely and can enjoy park programming safely. Safe passages were provided by SOCVI contractors at three Our SPOT parks in TPI communities (Mona, East Rancho Dominguez, Franklin D. Roosevelt). Violence interventionists consistently (1) monitor parks providing safe passage, (2) are additional caring and trusted adults onsite in addition to Our SPOT staff, and (3) engage the local community by developing a coordinated effort to promote peace, prevent violence, and respond to incidents as appropriate.

The purpose of the evaluation in 2022 was to continue monitoring the implementation of the program, highlight successes and challenges in this third year of implementation, and further understand the overall experience and impact of the program on youth participants.

